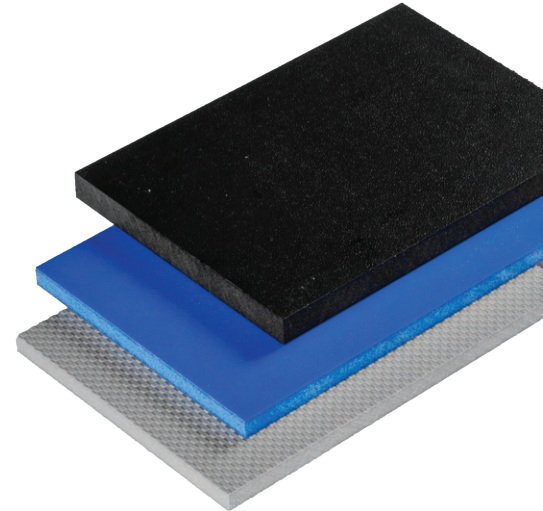


## Foamlite® P offers up to 30% less weight and better mobility than similar products

Take your projects to the next level with Roechling Foamlite® P. This closed-cell, foamed polypropylene has good mechanical, insulating, and chemical resistance properties and is up to **30% lighter** than comparable compact sheets.

### Product Features

- Can be worked on using conventional tools for wood and metal
- Reduced fuel consumption in transportation applications, leading to lower energy consumption, cost savings and environmental benefits
- Good rigidity combined with mechanical and thermal insulating properties
- UV stabilized and moisture-resistant for good durability in outdoor applications
- Easy to clean and shock-resistant
- “Integrated hinges” can be created with a simple router and bent more than 40,000 times, eliminating the need for metal hinges that are subject to corrosion
- Easily weldable with welding rod
- Available in multiple colors, textures, and thicknesses



### Suggested Applications

- Cargo, air freight, and rolling flight cases
- Chemical and wastewater treatment tanks
- Marine cabinetry, upholstery, flooring
- Vehicle cladding, walls, and partitions
- Food service applications
- Chemical benches and sinks
- Livestock pens and horse trailer flooring
- Service van and ambulance shelving and cabinetry



### Product Range

**Colors\*:** Black (RAL 9005), Grey (RAL 7004), EuroGrey (RAL 7032), White (RAL 9010), and Blue (RAL 5010)

**NEW:** Foamlite® bicolor features a different-colored core and can be milled for logos or lettering

**Thicknesses:** 6 mm to 18 mm

**Surface finishes:** Embossed/Embossed, Cubic Grain/Embossed, Checker Grain/Embossed

**Dimensions\*:** standard stocking size is 2000 mm x 3048 mm (78.74" x 120")

**Also available as:** Anti-static, and FDA Blue for food applications

*\*Additional colors and sheet sizes available upon request*

**Roechling Industrial. Empowering Industry.**

[www.roechling.com/us/industrial](http://www.roechling.com/us/industrial)

**Roechling Industrial Gastonia**

903 Gastonia Technology Parkway | Dallas, NC 28034 | USA  
Tel. +1 704 922-7814 | Fax +1 704 922-7651 | [info.gastonia@roechling.com](mailto:info.gastonia@roechling.com)

